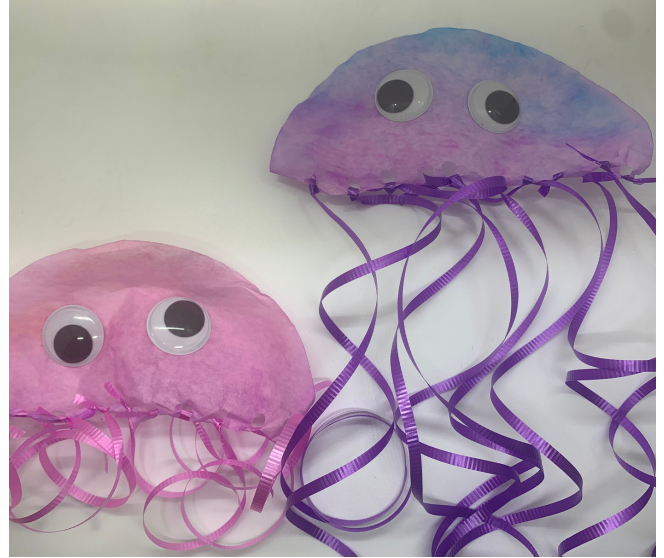




# COFFEE FILTER JELLYFISH

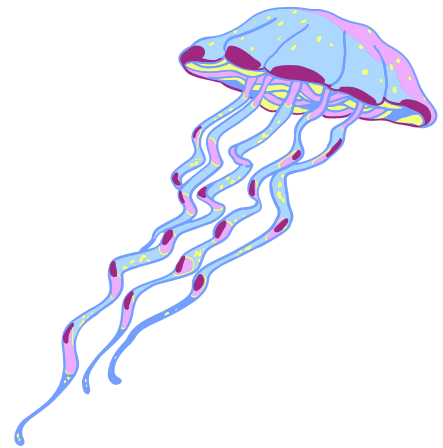
## Lesson of the Day:

Jellyfish mostly just float in the water, going wherever the water takes them. We can't live like that. We have to make choices that will take us down our path in life. Choose to be kind. Choose to help. Choose friendship.



## Materials:

- Coffee Filters
- Hole puncher
- Ribbons
- Markers
- Paintbrushes
- Cups with water
- Googly eyes



## Instructions:

1. Discuss the lesson of the day with your students. Talk about what it means to them.
2. Have students cut a coffee filter in half. They can each make two jellyfish. Let them color the coffee filter with markers, then take a paintbrush and a cup full of water to paint water over the colors and let them bleed.
3. Once the coffee filter is dry, let them punch holes in the bottom and tie on ribbons. They can also draw a face and glue on googly eyes.